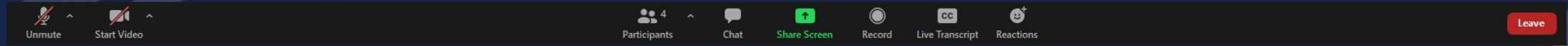




Rural Partners Network

Webinar: Resilient Rural Development through Cooperatives
by National Cooperative Business Association

Welcome!



- 1 **Mute/Unmute***
Attendees can unmute themselves
 - 2 **Start Video***
Optional
 - 3 **Participants**
A list of attendees in the session
 - 4 **Chat***
Attendees may chat and ask questions
 - 5 **Share Screen***
Not needed
 - 6 **Record**
This session is being recorded
 - 7 **Live Transcript**
Click to view auto-generated captions
 - 8 **Reactions**
Raise your Hand
 - 9 **Leave**
Leave the session
-
- The diagram illustrates the mapping of numbered buttons (1-9) to the Zoom toolbar and a list of functions. A blue arrow points from the 'Chat*' button (4) in the list to the 'Chat' button in the toolbar. Another blue arrow points from the 'Participants' button (3) in the list to the 'Participants' button in the toolbar. The 'Leave' button (9) in the list is highlighted in red, matching the 'Leave' button in the toolbar.



Cooperatives and RBCS Programs

January 10, 2024

USDA Rural Development Cooperative Services Branch Team Members

We work nationwide to assist Cooperatives, Development Centers, and Rural Development staff



Jim Wadsworth
Branch Chief
Cooperative Programs
Washington DC
james.wadsworth@usda.gov



Margaret Bau
Co-op Development
Wisconsin
margaret.bau@usda.gov



Meegan Moriarty
Co-op Legal Analyst
Virginia
meegan.moriarty@usda.gov



Debbie Rausch
Co-op Development
RD Programs
Ohio
deborah.rausch@usda.gov



Robi Fauser Fink
Co-op Development
RD Programs
Kentucky
robi.fauserfink@usda.gov

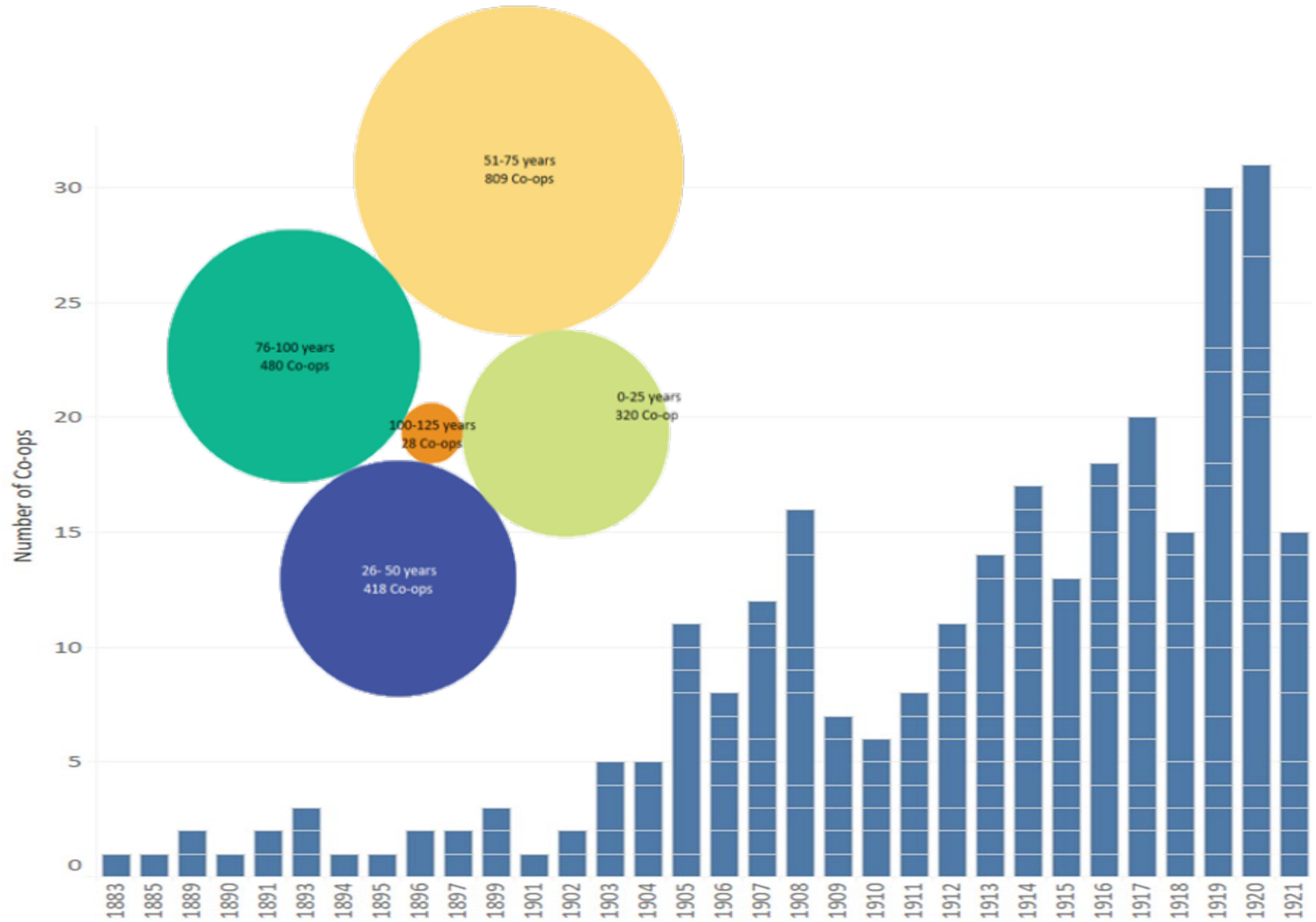
Agricultural Cooperative Statistics

Authorized by the Agricultural Marketing Act of 1926

Survey conducted annually

Published in a variety of formats

Contains industry comparison date, volume and financial





Interagency Working Group on Cooperative Development

The 2014 Farm Bill authorized the Agriculture Secretary to “*chair an interagency working group to **foster cooperative development and ensure coordination with federal agencies and ... cooperative organizations**....*” 7 U.S.C. section 1932(e)(12).

Federal, Tribal, State & Local and Private sector information, resources, along with inspirational success stories that cooperatives will find valuable.

<https://www.rd.usda.gov/about-rd/initiatives/interagency-working-group-cooperative-development>

Rural Economic Development Goals

- Provide public infrastructure and services-
 - roads, parks, affordable housing, safety and education
- Meeting economic objectives
 - stability, high employment, and sustainable growth
- Increase availability of goods and services
- Reduce poverty
- Improving standards of living

["Rural America at a Glance"](#)



Let's compare.....

Economic Development

- **Co-Learning**
- **Collaboration**
- **Community Driven**
- **Community Empowerment**
- **Dignity within Diversity**
- **Economic Autonomy**
- **Social Justice**
- **Sustainability**

Cooperative Development

- **Voluntary & open membership**
- **Democratic member control**
- **Member economic participation**
- **Autonomy & independence**
- **Education, training, information**
- **Cooperation among co-ops**
- **Concern for community**

Why are co-ops formed?

Defensive strategy

- Unmet social, economic need
- Market power imbalances

Proactive

- Ownership
- Wealth
- Local control

*Member-owners of Yolo Eco-Clean Cooperative
Davis, California*



Definition of a Cooperative

A cooperative is an autonomous association of persons

united voluntarily to meet their common

- Economic
- Social and
- Cultural needs and aspirations

through a jointly-owned and democratically-controlled enterprise.

Adopted in 1995 by the International Cooperative Alliance

*Member-owners of the Glut Food Cooperative
Mt. Rainier, Maryland*



User-Owned, User-Controlled, User-Benefit

- **User-Owned**
 - The people who own and finance the cooperative are those who use it
- **User-Controlled**
 - The people who use the cooperative are those who control the cooperative
- **User-Benefits**
 - The cooperative's sole purpose is to provide and distribute benefits to its members on the basis of patronage



*Oomingmak Musk Ox Producers Cooperative
Since 1969, Anchorage, Alaska*

Co-ops can keep businesses in the community

70% of businesses facing owner retirement in the coming decade

Rather than close, why not sell businesses over time to employees, the community, or both?

USDA B&I loan guarantee can help finance conversions.

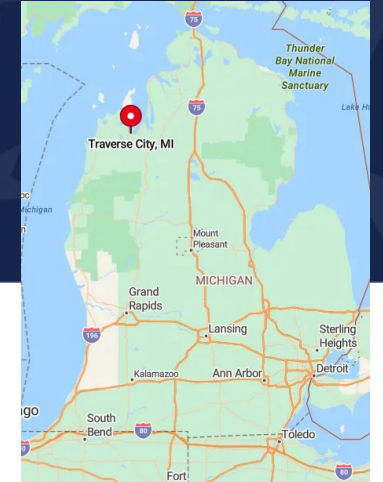


Real Pickles Cooperative,
Greenfield, MA

***Co-founders sold to employees,
became co-op members. Co-op
raised \$400K in equity from
community in 2 months***



Commongrounds Cooperative



Our mission is to build a more empowered community through cooperatively owned places that connect people and actively integrate wellness, arts, family and food.



- 2018 Initial Conversation
- 2019 Business Development
- 2020 Groundbreaking
- 2021 First Annual Member Meeting
- 2022 Building occupancy
- April 2023 open to the public

Currently the cooperative has over 950 members made up of business owners, residential tenants and community investors.

[Video Source: Traverse City Tourism](#)

Commongrounds Cooperative Traverse City, MI



Join us for a deeper dive into [Commongrounds](#) Co-op accessing USDA's [Business & Industry loan guarantee](#) program!

We will hold the webinar on February 8, 2024 from 2:00-3:30 pm Eastern Time.

Microsoft Teams meeting

Join on your computer, mobile app or room device

[Click here to join the meeting](#)

Meeting ID: 273 985 683 368

Passcode: g3GtoY



Questions?



NCBA CLUSA

THE NATIONAL COOPERATIVE BUSINESS ASSOCIATION | CLUSA INTERNATIONAL

BUILDING AN INCLUSIVE ECONOMY. TOGETHER.



ABOUT NCBA CLUSA

Established in 1916, **NCBA CLUSA** is the oldest and largest trade association for cooperatives representing all co-op sectors



MORE THAN

900

ELECTRIC CO-OPS
OWN AND MAINTAIN

42%

OF U.S. **ELECTRIC DISTRIBUTION**
LINES, POWERING

56%

OF THE NATION'S LANDMASS³



FOOD CO-OPS REPRESENT OVER

\$2 BILLION

OF THE GROCERY
MARKET WITH OVER

1.3 MILLION

MEMBER-OWNERS²



A MAJORITY OF AMERICA'S

1.9 MILLION

FARMERS AND RANCHERS
BELONG TO AT LEAST ONE
OF THE COUNTRY'S

1,800

AG CO-OPS¹



86,000

CREDIT UNIONS
WORLDWIDE SERVE
MORE THAN

393 MILLION

MEMBERS¹



THERE ARE
MORE THAN

250

PURCHASING CO-OPS

IN THE U.S.³



DAIRY CO-OPS
HANDLE

85%

OF MILK

IN THE U.S.²

INDUSTRY SECTORS

- AGRICULTURE
- RETAIL
- UTILITIES
- WORKER
- PURCHASING
- HOUSING
- CONSUMER FINANCE

EXAMPLES

- CHILDCARE
- FINANCIAL SERVICES
- FOOD
- FARM LABOR



THE COOPERATIVE DIFFERENCE

Compared to other business models, cooperatives:

- **Reinvest** back into the local economy at higher rates
- Create and maintain more **high-quality jobs**
- Source **more goods locally**
- Are more **responsive to community** needs
- Feature **higher** worker **productivity** and lower workforce turnover
- Empower member-owners to be **more civically engaged**
- Have **greater business survival** rates



FOR EVERY
\$1,000
SPENT AT A FOOD CO-OP,
\$1,604
IS INVESTED BACK INTO
THE LOCAL ECONOMY³



LOCAL PRODUCTS MAKE UP
21%
OF FOOD CO-OP SALES,
COMPARED TO THE NATIONAL
GROCERY AVERAGE OF
1.8%⁵



ELECTRIC CO-OPS
INVEST
\$12 BILLION
ANNUALLY IN LOCAL
ECONOMIES⁶



AG CO-OPS PROVIDE
250,000 JOBS
PAYING
\$11 BILLION
IN WAGES AND BENEFITS
TO RURAL AMERICANS⁴

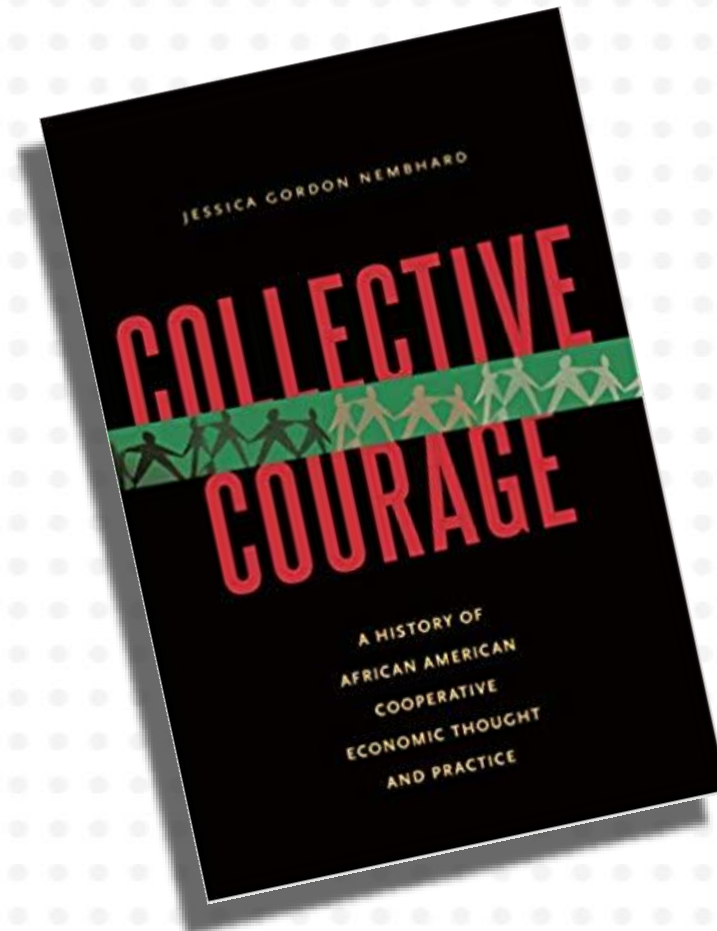


COOPERATIVES ARE A TIME-TESTED MODEL

Co-ops are a proven tool to build an inclusive economy, particularly in historically underserved communities where there is a longstanding tradition of cooperation



PEOPLE OF COLOR MAKE UP
56.8%
OF WORKER-OWNERS, AND
PEOPLE IDENTIFYING AS FEMALE
MAKE UP
62.5%
OF THE WORKFORCE AT
WORKER CO-OPS³



CDF's AFFORDABLE HOUSING INITIATIVE

- Promote the preservation and development of permanently affordable housing through shared equity models (SEH)
- Help educate policymakers, communities and residents about these models
- Demonstrate how shared equity can advance racial equity, housing stability and other outcomes
- Identify policy, financial and technical assistance needs to scale model

Advisors



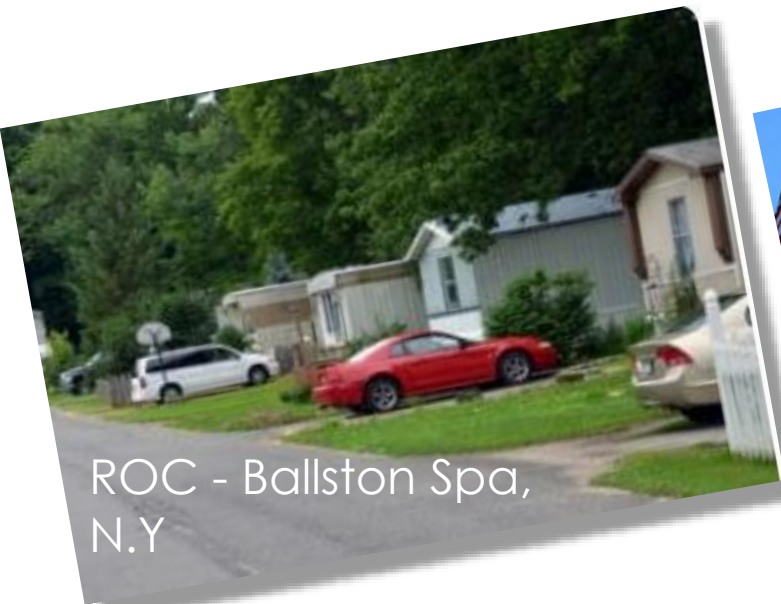
Affordable
Housing
Initiative



WHAT IS SHARED EQUITY HOUSING?

Features

- The housing is owner occupied
- Affordability maintained for future generations
- Equity is shared
- Community-led entity oversees the land or housing



Affordable
Housing
Initiative

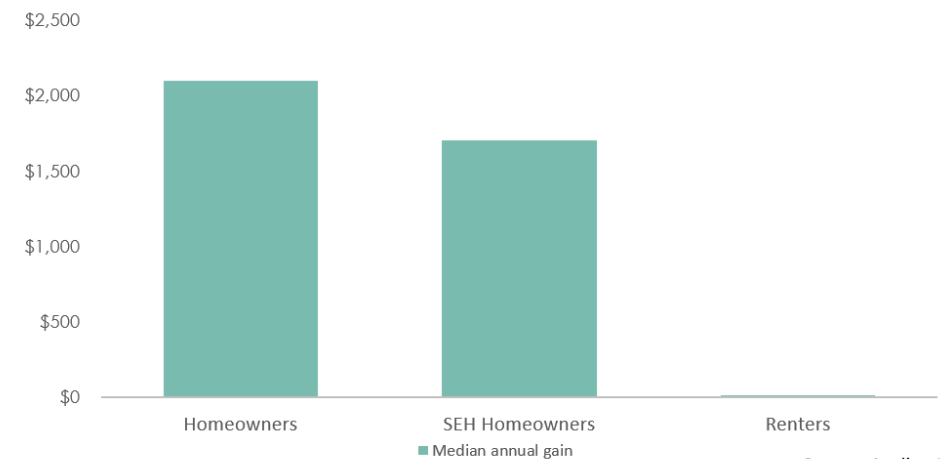
A PROJECT OF
CDF
Cooperative Development Foundation

WHY SHARED EQUITY HOUSING?

- Provides permanently affordable ownership alternative to rental across country
- Adaptive, providing solutions tailored to meet the unique needs of diverse communities
- Promotes owner-occupancy and supports local workforce needs
- Long-established models with demonstrated benefits for residents and communities, including increased social and financial capital



Housing Wealth Accumulation
1997-2017



Source: [Acolin et al, 2021](#)

Limited-Equity Housing Cooperatives

- 167,000 LEC homes nationwide
- Democratically Controlled
- Cooperatively Owned
- Permanently Affordable
- Resurgent Interest

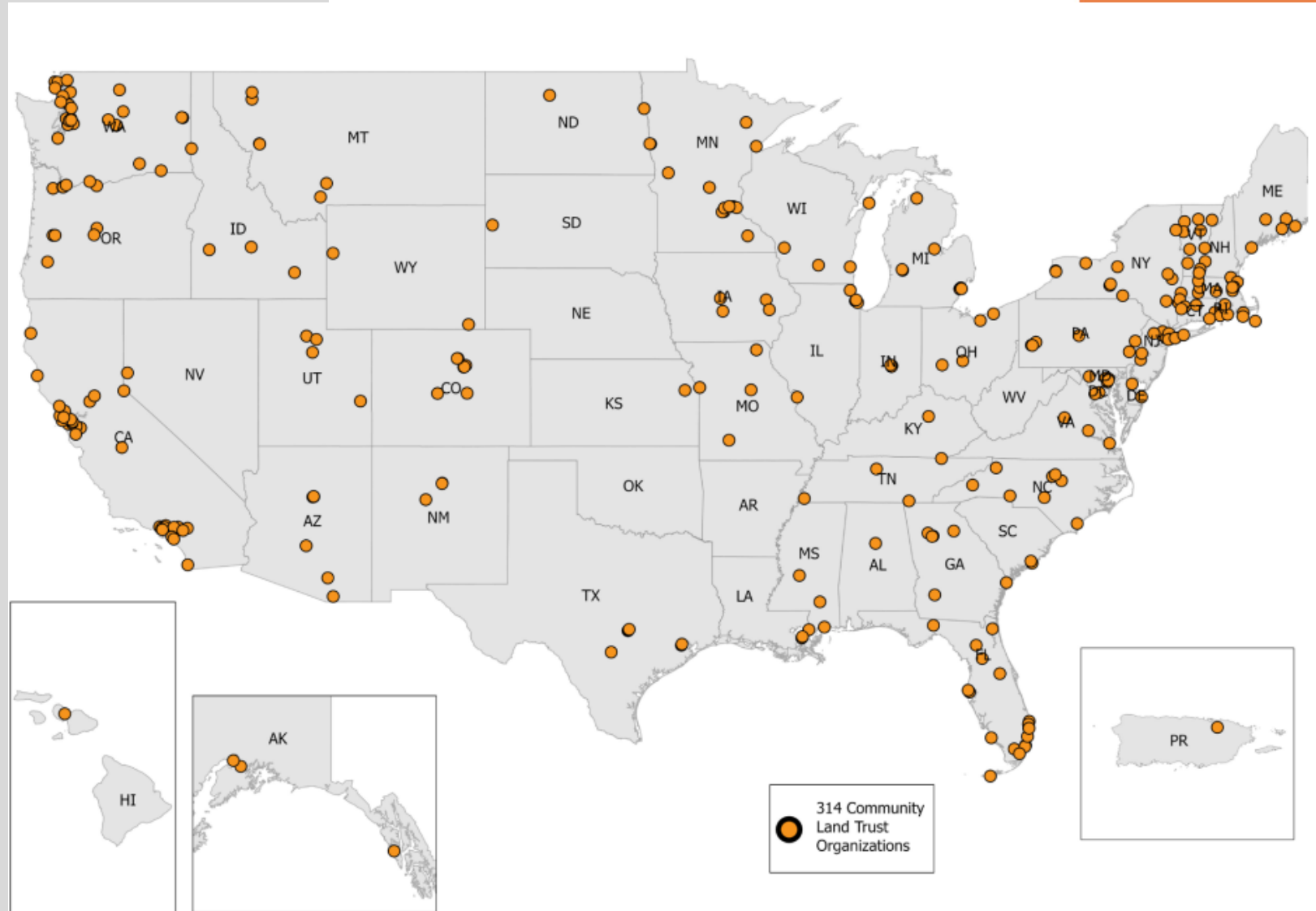


Affordable
Housing
Initiative

Community Land Trusts



- Acquire, own and steward land **permanently** for the common good by providing Affordable housing, Commercial spaces, Community spaces, Farming or open land
- More than 300 CLT/SE entities hold over 40,000 housing units across the country, with CLT/SE entities found in almost every state



Shared Equity Model



- Purpose: own, maintain as affordable in perpetuity
- Articles of Incorporation restrict resale and dissolution
- Shares and interests fixed and equal among all Members
- Restricts membership to homeowners in co-op's community
- Governed by Member-elected board of directors
- Homeowner members receive proprietary lease
- 75% of homebuyers earn less than 80% of Area Median Income



Affordable
Housing
Initiative

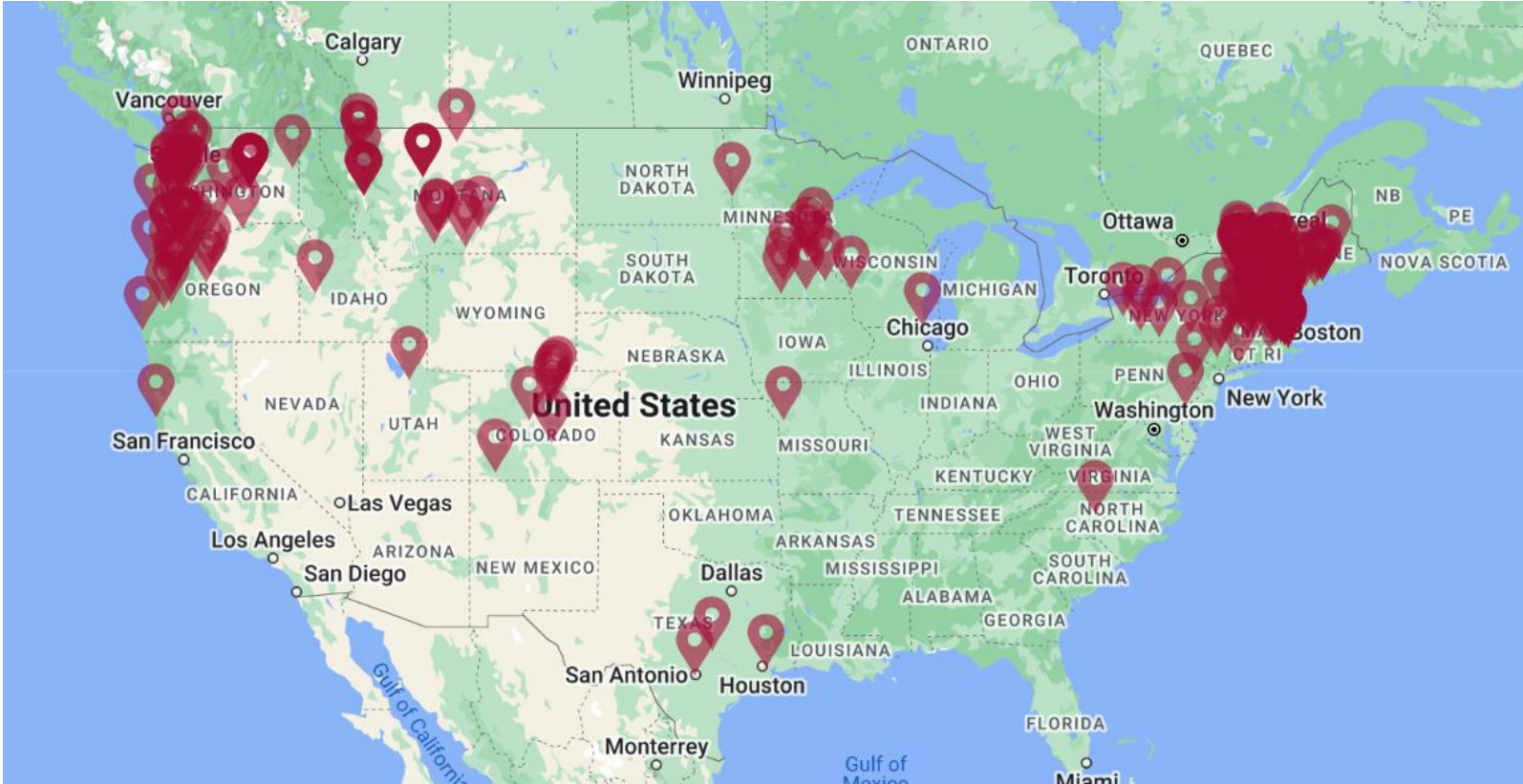
A PROJECT OF
CDF
Cooperative Development Foundation

ROC USA Communities

317 ROCs in 21 states

22,000
homeowner
households

Zero foreclosure rate



Affordable Housing Initiative

A PROJECT OF
PDF
Cooperative Development Foundation

Resident Owners contrast with large consolidators

The Financial Times reported on abutting communities – one REIT-owned and one a co-op – in Clackamas, Oregon:

- **Affordability** of site-fees 2012 to 2017:
 - REIT: Increase from \$638 to \$828 per month
 - Co-op: Steady at \$590
- **Neighborhood investment:**
 - REIT: A resident reported, “nothing has yet been done about repairs to pavement ... there are new sewer leaks.”
 - Co-op: Residents’ report, “We have made major investments in reclaiming the salmon habitat and building walking trails.
- **Community identity:**
 - REIT: “They don’t talk to us. They don’t seem to have time.”
 - Co-op: “It’s a secure, friendly community. We won’t be moving ever again.”





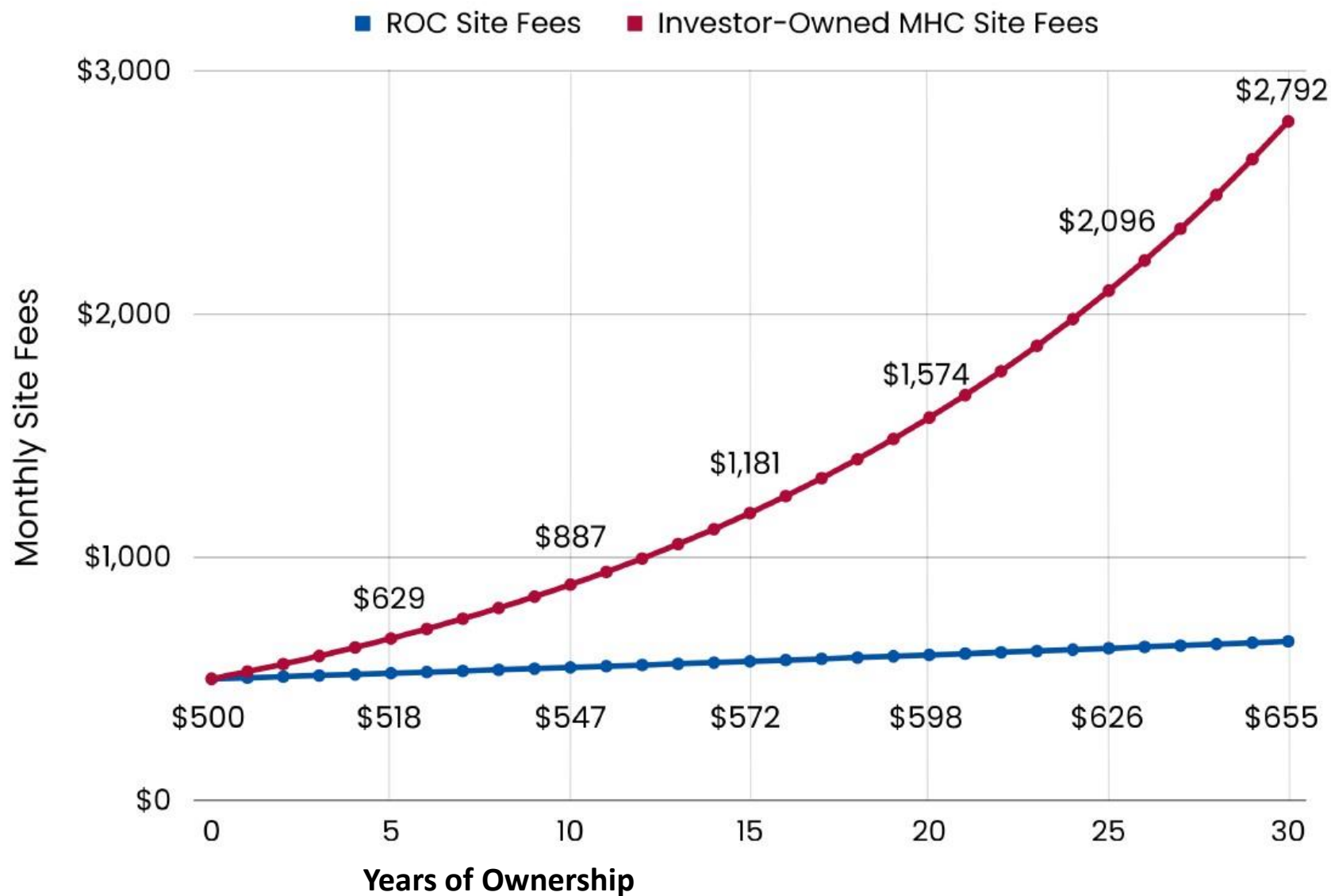
“ROCs are one of the few sources of unsubsidized naturally occurring affordable housing in the country not subject to market-based rent increase.”

2019, Freddie Mac, Spotlight on Underserved Markets

Scale and Impact

- 317 Resident Owned Communities
- 21 states
- 22,000 home-sites preserved
- Site-fees are \$600/year below market after 5 years of ownership (Colliers, longitudinal study)
- ROCs raising site-fees 1% per year versus 5.9% industry average (portfolio data and Colliers)
- Homes in ROCs sell faster and for more than comparable homes in comparable investor-owned MHC. (2006 UNH)
- CDFI – ROC USA Capital – with more than \$300M in originations
- 10 Affiliated nonprofits plus a Direct Technical Assistance team for nationwide services

- *Annual Rate for ROCs (0.9%) based on average performance of all co-ops in ROC USA[®] Capital's portfolio.*
- *Annual Rate for commercially owned communities (5.9%) reported by Colliers.*





STRENGTHENING THE COOPERATIVE ECOSYSTEM

AMERICAN RESCUE PLAN TECHNICAL ASSISTANCE INVESTMENT PROGRAM – 2022-2027

Teia Evans-Project Director
Bernardo Penaherrera – Program Associate
Kiara McGowan – Events & Digital Communications



Strengthening the Cooperative Ecosystem in the US

Objectives:

- Introduction to USDA programs
- Financial Literacy
- Market Planning
- Technical Support



"...SUPPORTING THE ORGANIZATIONAL DELIVERY OF TECHNICAL ASSISTANCE PROJECTS AND ESTABLISHMENT OF TECHNICAL ASSISTANCE NETWORKS."



National Institute of Food and Agriculture
U.S. DEPARTMENT OF AGRICULTURE



NCBA CLUSA'S MAJOR ACTIVITIES



Increase awareness of
the cooperative model



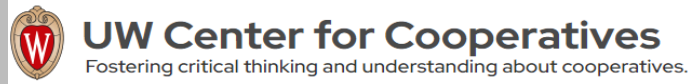
Create culturally
appropriate resources



Develop a cadre of
cooperative
developers with
economic and cultural
ties and experience

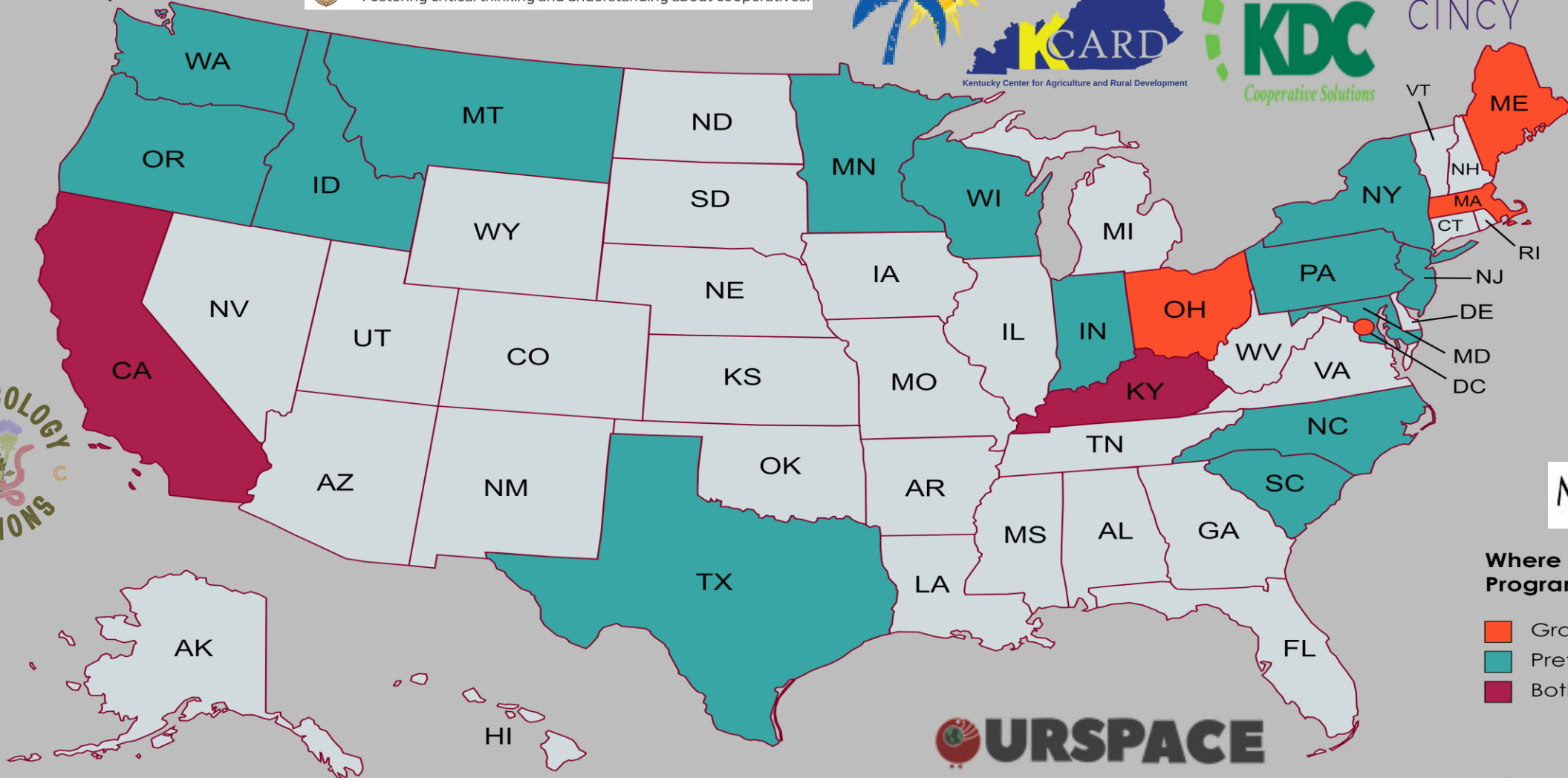


Research policy and
regulatory factors that
encourage sustainable
development



Where We Serve 2023 Programs

- Grantee
- Preferred Vendor
- Both



COOPERATIVE DEVELOPMENT INSTITUTE



2024 GRANTEES

2020 Farmer's
Cooperative

Common Ground
Producers

Fundacion
Bucarabon

Ujamaa Farmer
Collective

Ventures

** Allensworth
Progressive
Association





Common Ground Producers and Growers, Inc.

“All are fed. No one is hungry!”

Pearson's Farms established
1968

55 years serving our communities

largest African American urban
farm in the area

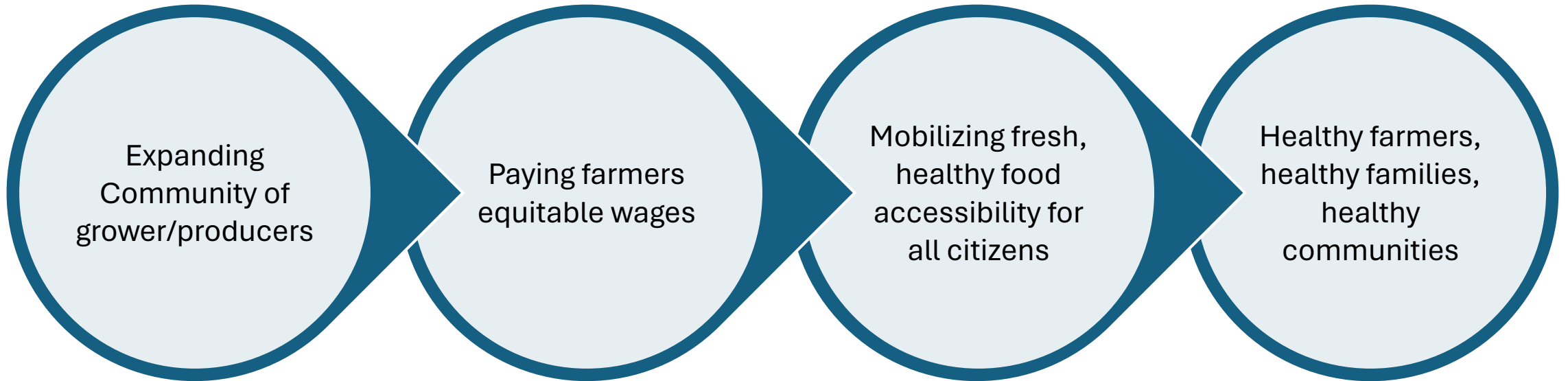
in honor of Robert C. and Addie Williams
Pearson





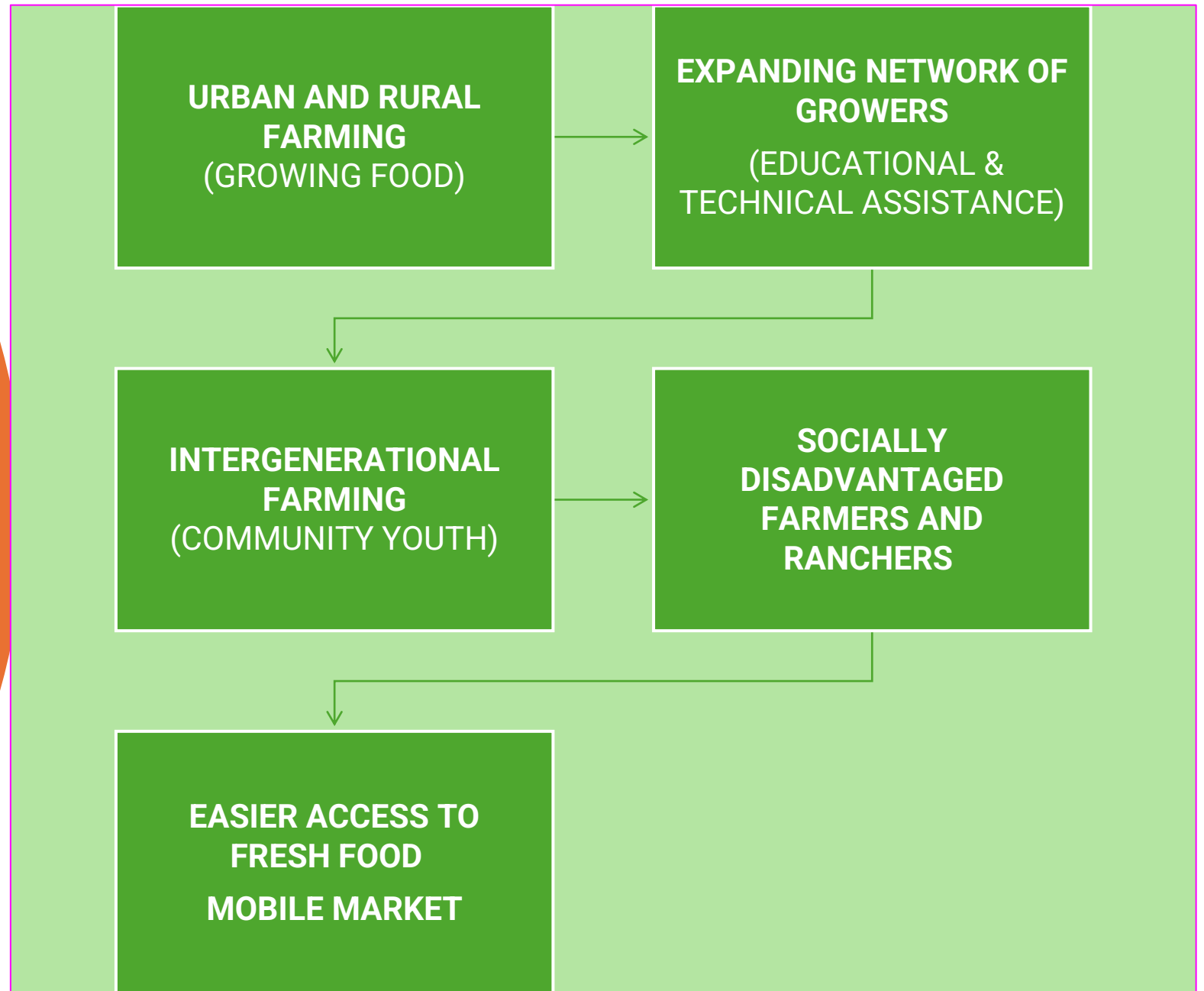
- **Mobile Market began in 2014 with 7 locations.**
- **During 2020-2021 COVID pandemic Common Ground collaborated with community partners to provide more than one million pounds of food to Wichita communities through Farmers to Families food boxes.**
- **Currently serve multiple urban and rural locations in a twelve- county area in central Kansas including 28 senior, and multi-resident housing locations.**
- **Our network of growers help to provide more than 15,000 pounds of fresh produce to our communities.**
- **Approximately 10,000 pounds of produce donated to organizations, individuals and families.**
- **We practice ZERO WASTE!**

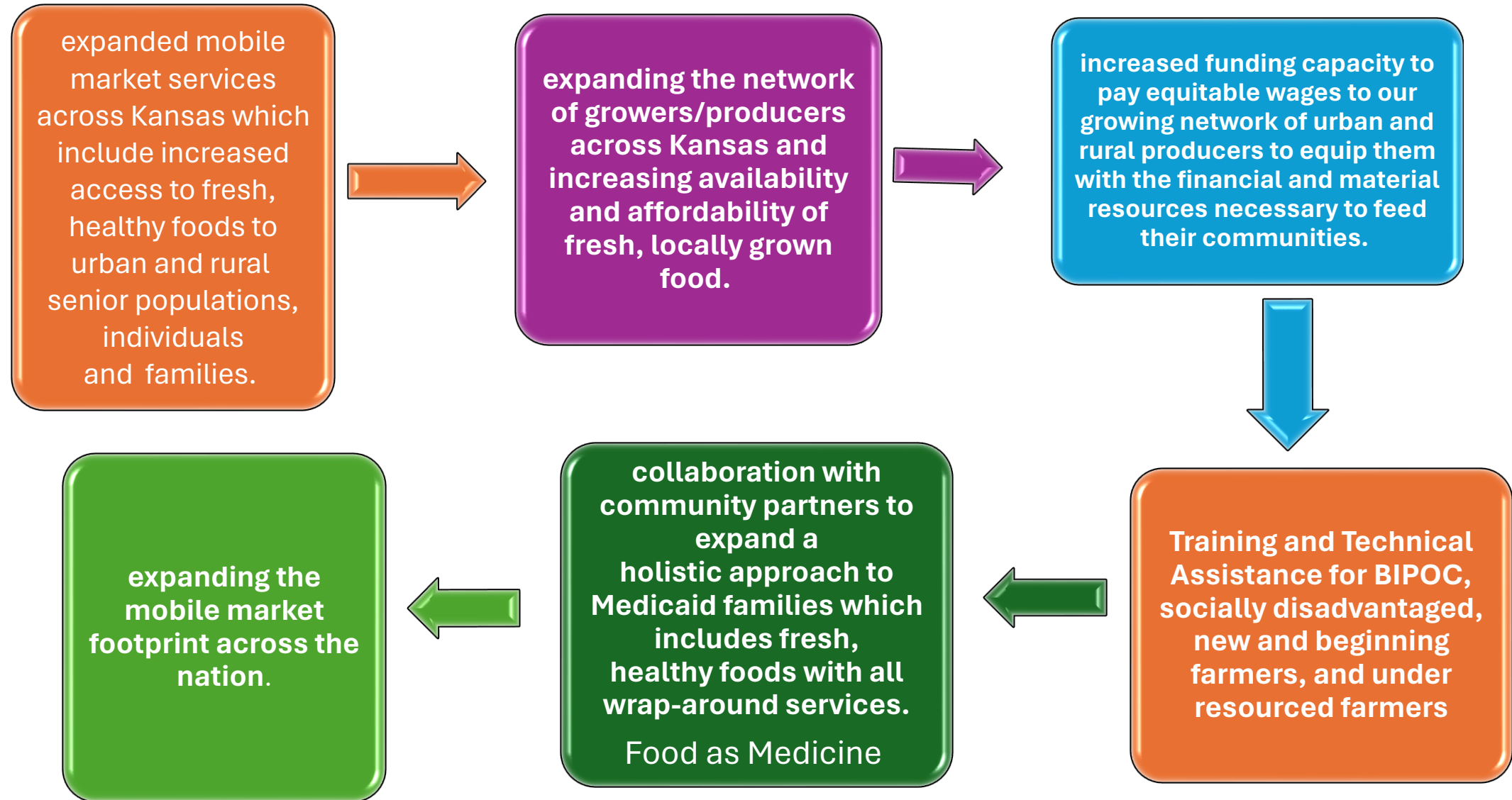
connecting the dots



Goal: Health Equity for all communities which must include access to healthy food!
Social Determinates of Health (SDOHs)

OUR FOCUS







This is how we do it!





Common Ground Producers and Growers, Inc.

“All are fed. No one is hungry!”

commongroundpg.com

https://www.farmtalknews.com/news/common-ground-mobile-market-delivers-fresh-greens-to-food-insecure-communities/article_cae7b918-19ea-11ee-b14b-af31e15f11d8.html



ROOTED TRADITIONS WORKER CO-OP

BUILDING NEW SOURCES OF PERSONAL INCOME AND
BUSINESS SKILLS IN EASTERN NORTH CAROLINA

USDA RURAL PARTNERS NETWORK

CO-OPS ADDRESSING RURAL NEEDS

10 JANUARY 2024

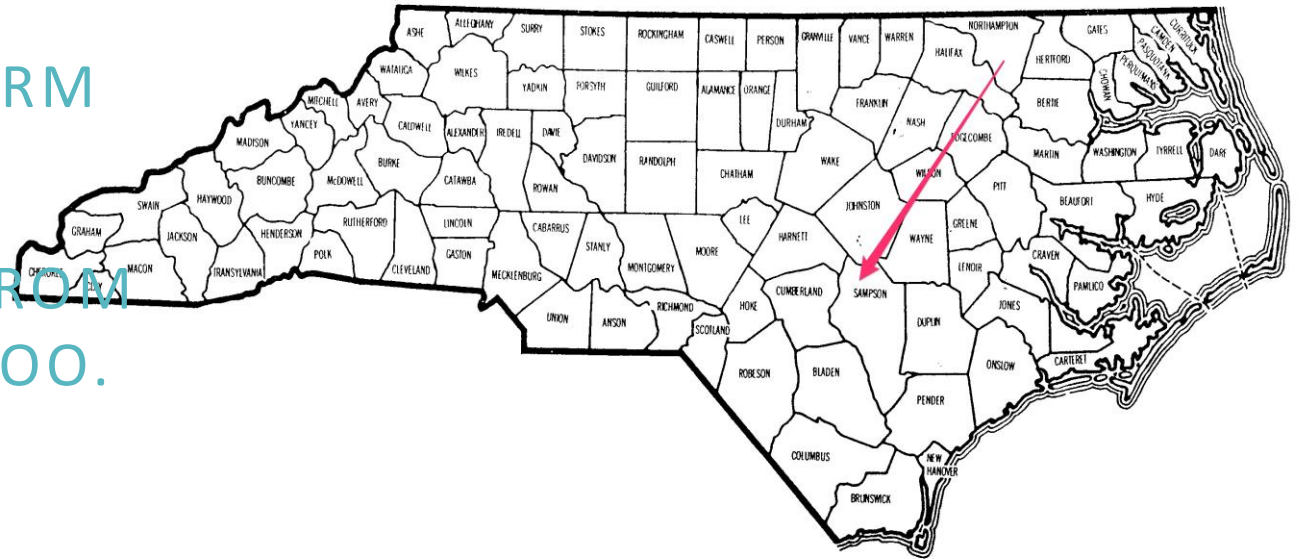


ROOTED TRADITIONS

NEED: RURAL IMMIGRANT LATINAS
WITH FARMWORKER FAMILIES.

INITIAL SPONSOR: EPISCOPAL FARM
WORKERS MINISTRY.

ENTERPRISE: GROWING HERBS FROM
WHICH TO MAKE SOAP & SHAMPOO.





ROOTED TRADITIONS

CONTACTED BY EFWM

PROJECT LEAD: GABRIEL MUÑOZ
NAVIA

AGRICULTURE & WISDOM: KELLY
LIDDINGTON

ALSO: TOM BECKETT





ROOTED TRADITIONS

APPROACH: WORKER CO-OP.

DEVELOP PERSONAL INCOME AND WEALTH.

DEVELOP MEMBER SKILLS IN HERBAL MEDICINE, PRODUCTION, BUSINESS.

SERVE COMMUNITY NEEDS.

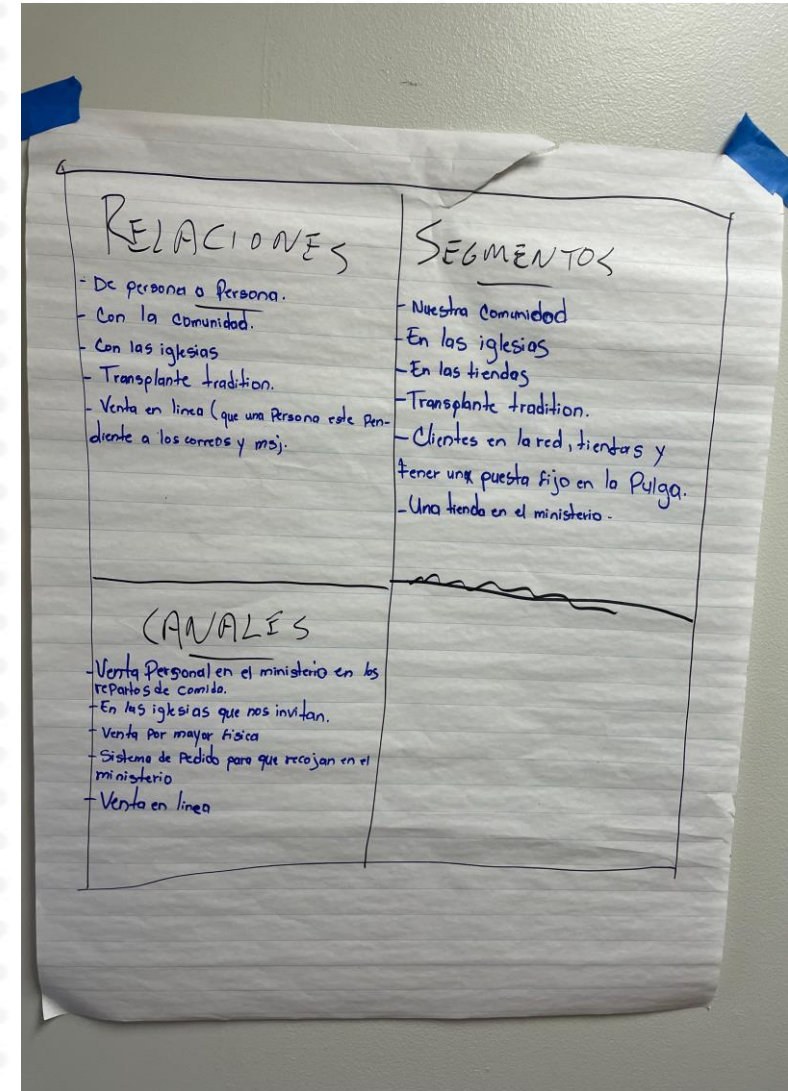




ROOTED TRADITIONS

TRAINING APPROACHES:

BUSINESS MODEL CANVAS





ROOTED TRADITIONS

TRAINING APPROACHES:

BUSINESS MODEL
CANVAS

HORTICULTURAL
PRACTICES





ROOTED TRADITIONS

TRAINING APPROACHES:

BUSINESS MODEL CANVAS

HORTICULTURAL PRACTICES

PARTNERS: PRODUCTION
PRACTICES & SAFETY

Rebecca Vann, Herbalist
Cooperative Extension





ROOTED TRADITIONS

TRAINING APPROACHES:

BUSINESS MODEL CANVAS

HORTICULTURAL PRACTICES

PARTNERS: PRODUCTION
PRACTICES & SAFETY

1:1 TRAINING IN BUSINESS,
FINANCE, “PRODUCTION
MATH.”





ROOTED TRADITIONS

TRAINING APPROACHES:

BUSINESS MODEL CANVAS

HORTICULTURAL PRACTICES

PARTNERS: PRODUCTION
PRACTICES & SAFETY

1:1 TRAINING IN BUSINESS,
FINANCE, “PRODUCTION MATH.”

MARKET CHANNELS





ROOTED TRADITIONS

CHALLENGES:

MEMBERS HAVE JOBS & FAMILY.

EFWM LEADERSHIP
CHANGE & LOSS OF
FACILITY.





ROOTED TRADITIONS

ADVANTAGES:

CORE MEMBERS COMMITTED.

PARTNER SUPPORT FROM
COOPERATIVE EXTENSION,
NCBA/CLUSA, WSM.





ROOTED TRADITIONS

USDA Rural Partners Network



Carolina Common Enterprise

commonenterprise.coop

*Cooperation Releases
Abundance.*



KDC

Cooperative Solutions

Keystone Development Center

Developing a strong & equitable cooperative ecosystem throughout the Mid-Atlantic

www.kdc.coop

About KDC

Established in 1999

Over 300 clients served

Sectors Served

- Agriculture
- Grocery
- Telecommunications
- Energy/Utilities
- Transportation
- Artists
- Housing
- Home Care
- Construction
- Education

www.kdc.coop



About KDC

Established in 1999

Over 300 clients served

Services Offered

- Research
- Business Development
 - Market Analysis
 - Feasibility Studies
 - Business Plans
 - IT support
- Organizational Development
 - Bylaw development
 - Strategic planning
 - Leadership training
 - Member education

www.kdc.coop



Rural Producer Co-ops



- Allegheny Grass Fed Beef Co-op
- Keystone Tree Crops Cooperative
 - Jersey Cut Flower Market
 - Chesapeake Flower Growers

Rural Producer Co-ops

in progress



- Maryland Lamb
- Rappahannock Tribe
- Natural Dye
- Visual & other artists

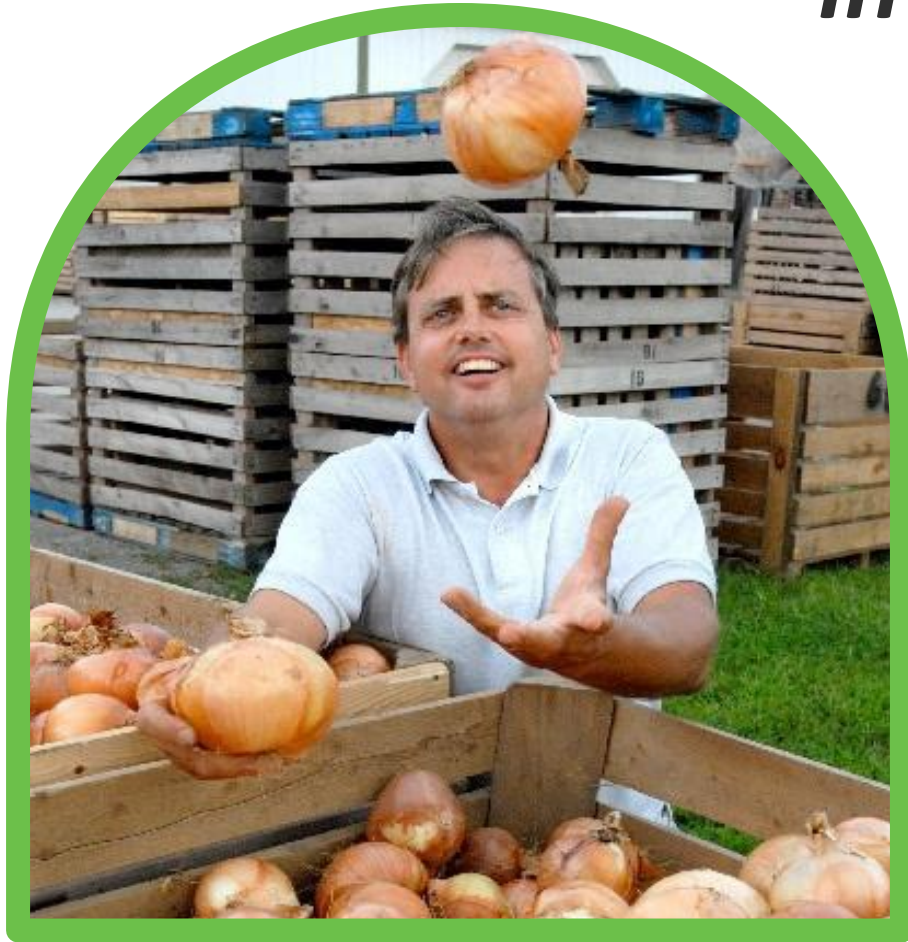
Rural Consumer Co-ops



- Common Roots Renting Co-op
- Northwest PA Investment Co-op
- Clean Energy Co-op

Rural Consumer Co-ops

in progress



→ food co-op in rural PA

Rural Worker Co-ops

in progress



- conversion of a dance studio
- worker-owned construction cooperative

Keystone Development

Developing a strong & equitable cooperative ecosystem throughout the Mid-Atlantic since 1999

Serving

- **Pennsylvania**
- **Maryland**
- **Delaware**
- **New Jersey**

www.kdc.coop





Café del Futuro

Partnerships for Climate Smart Puerto Rican Coffee
Grant #NR233A750004G031

Marcus Laws, Director de Proyecto, NCBA CLUSA

Enero 10, 2024

Rural Partners Network Webinar: Resilient Rural Development through Cooperatives



Guayanilla



Maricao

Alianzas para bienes agrícolas climáticamente inteligentes (CI)

- **Presupuesto global**=\$3.1 B

- **Duración:** 2023-2027

- **Objetivos del Programa**

1. Promover e incentivar implementación de prácticas CI.
2. Incrementar la producción CI.
3. Fomentar mercados para productos CI.

¿Dónde trabaja?

- **141 proyectos piloto** seleccionados en todo el territorio EE.UU. de 1,000+ propuestas valoradas en \$20B
- **3 proyectos en Puerto Rico** = \$27M



PARTNERSHIPS FOR **CLIMATE-SMART** COMMODITIES **BY THE NUMBERS**

The U.S. Department of Agriculture is investing over **\$3.1 billion** in **141 selected** projects under the Partnerships for Climate-Smart Commodities.

PROJECTS BY COMMODITY



PROPOSAL INVESTMENTS

Proposals for the

141

tentatively selected projects
include plans to match

→ **50%**

An average of

of the federal investment
with non-federal funds.

PROJECTS BY AWARD SIZE*

71

Under \$5M

22

\$5-20M

25

\$25M-45M

09

\$50M-65M

14

\$70M-95M



~100

universities, including more than
30 **minority-serving institutions**,
engaged & helping advance projects.

20+

tribes and tribal groups
engaged and leading on
many projects across a
wide geography.



60,000

farms reached, encompassing
acres of working land
engaged in climate-smart
production practices.

25M



Hundreds of expanded markets

and revenue streams for producers and
commodities across agriculture ranging
from **traditional corn** to **specialty crops**.



More than **60 million metric tons** of carbon dioxide equivalent sequestered
over the lives of the projects. This is equivalent to removing more than
12 million gasoline-powered passenger vehicles from the road for one year.

* USDA works with organizations to develop the most compelling cases.

USDA is an equal opportunity provider, employer, and lender.

Para más información y el tablero de proyectos - <https://www.usda.gov/climate-solutions/climate-smart-commodities>

Situación Actual



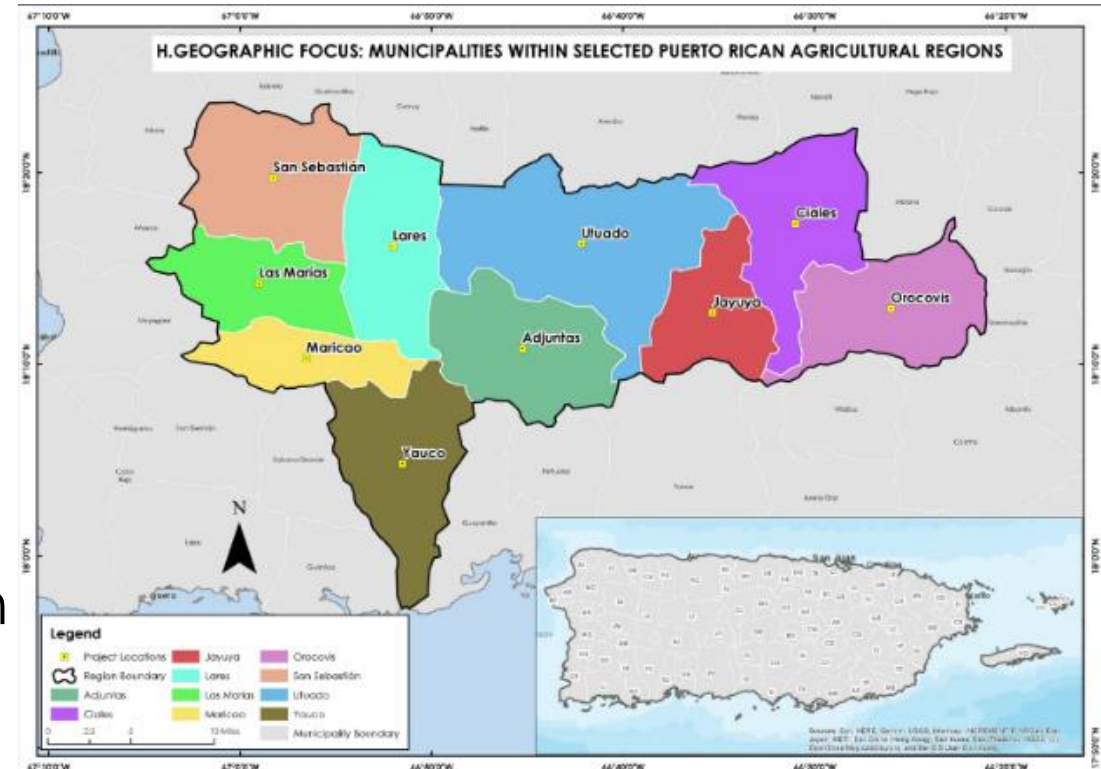
Hacienda Caracolillo, Maricao
Foto – Daniel Morales

- 100M+ árboles perdidos/dañados por huracanes María + Irma (2017)
 - 20M de café y sombra
- Cosechas dañadas:
 - 85% 2017
 - 35% 2022 – H. Fiona de 30" de lluvia
- [2018 Puerto Rico Censo Agrícola](#)
 - Fincas de café - 2,445 / 13,283 cuerdas
 - Bajo sombra – 818 / 3,804 cuerdas
 - **Al raso (bajo sol) - 1,627 / 9,479 cuerdas**
 - Finca promedio = 5.43 cuerdas
- <250 cooperativas
 - 100 ahorro y crédito /119 Tipos diversos
 - 7 Agrícola / 1 de café
 - [Coop AgroComercial / Café Cibales](#)

Café del Futuro

- **Presupuesto**=\$15M
- **Duración:** Abril 19, 2023-Sept 17, 2027.
- **Commodity:** *Café Arábica* y madera fina
- **Objetivos:**
 1. Fomentar sistemas agroforestales multi-nivel bajo semi-sombra.
 2. Cuantificar y certificar huella de carbono
 3. Abrir y/o expandir mercados
 4. Promover el modelo cooperativo como una solución a los retos que bregan los productores

¿Dónde vamos a trabajar principalmente?
Concentrado en estos 10 municipios donde 90% de los productores viven



¿Cuáles son las metas?

En concreto, el proyecto busca alcanzar las siguientes metas y objetivos cuantitativos:

#	Objetivos cuantitativos	Total
1	Número de productores históricamente desatendidos involucrados	2,000
2	Número de acres involucrados	10,000
3	Número de árboles distribuidos a los agricultores (café, sombra, madera fina, y otros)	2,750,000
4	Total de personas alcanzadas	10,000
5	Total de incentivos a los agricultores para la implementación de CSAF	\$5,000,000
6	Beneficios de GEI (MT CO2 equivalente secuestrado)	40,000
7	Aporte del agricultor por árbol de café	\$0.20

*2.6M de árboles de café y 150k de sombra, madera fina (especies nativos y endémicos), entre otros

20 Prácticas Conservación Climáticamente Inteligentes

NRCS Practice Code (if applicable)	Practice Name
327	Conservation Cover
328	Conservation Crop Rotation
329	No Till
332	Contour Buffer Strips
340	Cover Crop
345	Reduced Till
386	Field Borders
484	Mulching
601	Vegetative Barriers
311	Alley cropping
342	Critical Area Planting
379	Multistory Cropping/Forest Farming
380	Windbreaks/shelterbelt Establishment and Renovation
391	Riparian Forest Buffers
422	Hedgerow Planting
612	Tree/Shrub Establishment
590	Nutrient Management
595	Pest Management Conservation System
645	Upland Wildlife Habitat Management
666	Forest Stand Improvement

*Fuente: NRCS - [Agricultura y silvicultura climáticamente inteligente](#) (CSAF) Lista de actividades de mitigación [1] FY2023

Beneficios:

- **Secuestro de Carbon**
- Mejor Calidad de Café
- > Resilencia
- > Biodiversidad
- Aumento en Servicios Ecosistémicos
- Mejor Calidad de Agua
- < Erosión
- Disminución deslizamientos
- > Retencion de agua
- > Diversidad de Cosechas
- > Retención de Nutrientes
- Cultivos más saludables
- < Insumos agrícolas
- < Competencia de malezas
- Costos abaratados

¡Mayor resiliencia del caficultor frente al cambio climático!

Emisiones de GHG: Modelaje y Muestreo de campo

Cuantificación y evaluación por práctica de conservación

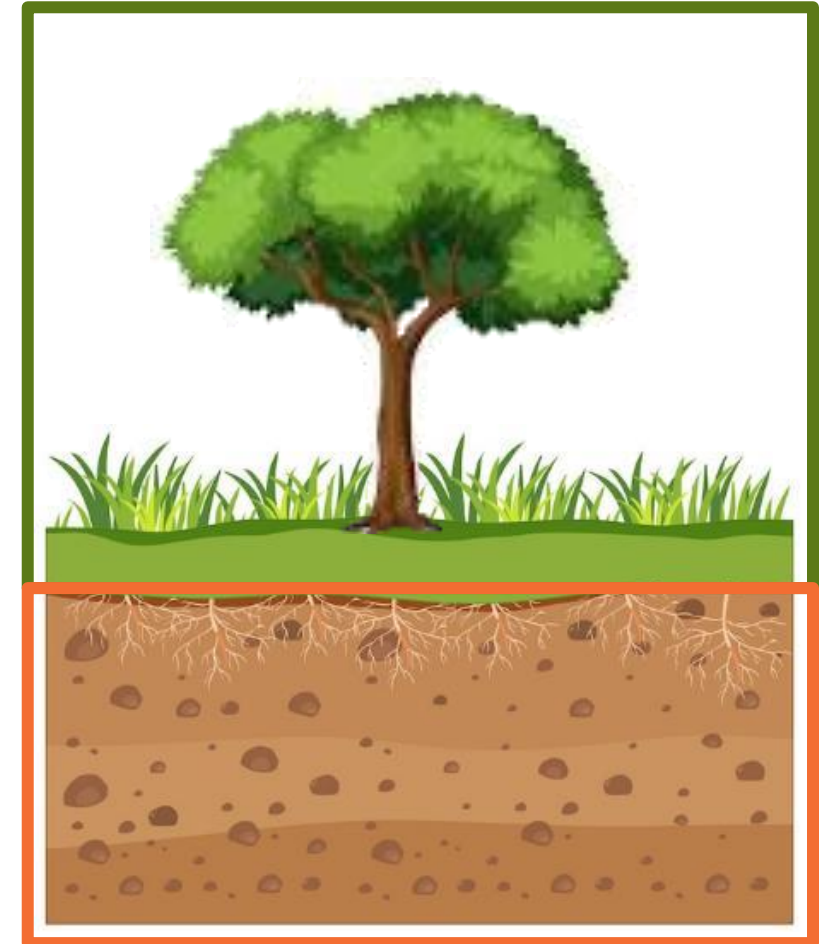
Muestreo de Campo:

- Estimación masa total
- Contenido de carbón (wt%)
- Diámetro Altura del Pecho (DBH)
- Taza de mortalidad
- Contenido de carbon (wt%)
- Monitoreo de emisiones de GHG (CO_2 , CH_4 , N_2O) usando una cámara de gases

Modelaje: modelos computacionales (i-Tree, USDA Comet, Cool Farm, etc.)

Aportación Principal: Recolectar data para modelar sistemas trópicos

Biomasa



Suelo

Alianza de Socios



- **Productores de Café de Puerto Rico ([PROCAFE](#))**: Desde 2019, tiene 500 socios Productores, implementado 3 Proyectos parecidos al CdF, distribuido 3.2M de árboles.
 - Asistencia técnica, acompañamiento, outreach, colección de datos, distribución de árboles.



- **Universidad de Puerto Rico – Estación Experimental Agrícola ([UPR-EEA](#))**: Land Grant University, EEA fundada en 1910, comprende dos centros de investigación y seis estaciones de campo regionales en todos los climas representativos de Puerto Rico.
 - Cuantificación de los gases invernaderos, Investigación CS



- **[SUSTAINCERT](#)**: certificadora oficial de Gold Standard, un organismo de estándares reconocido mundialmente para la evaluación del impacto del clima y los Objetivos de Desarrollo Sostenible (ODS).
 - Verificación de GEI y metadología de cuantificación, Scope 3
 - Certificación de HdC en la cadena de suministros de corporaciones, Fortalecimiento de Capacidades



- **La Liga de Cooperativas de Puerto Rico ([La Liga](#))**: 74 años representando, defendiendo, y promoviendo el movimiento cooperativo
 - Promoción, formación y el enamoramiento del modelo cooperativo

SERVICIOS DISPONIBLES PARA ORGANIZAR UNA COOPERATIVA



LIGA DE COOPERATIVAS DE PUERTO RICO

- Orientaciones sobre el modelo cooperativo
 - Como formar una cooperativa
 - Cooperativismo
 - Identidad Cooperativa
- Consultas Sobre
 - Leyes
 - Reglamentos
 - Procedimientos
- Educación Cooperativa
 - Seminarios
 - Charlas



INSTITUTO DE COOPERATIVISMO UPR

- Investigaciones sobre el modelo cooperativo en Puerto Rico.
- Maestría en Cooperativismo
- Incubadora de cooperativas
 - 45 horas de contacto
 - Sesiones presenciales (en la UPRRP)
 - Sesiones virtuales sincrónicas (Teams)
 - Sesiones virtuales asincrónicas (Moodle)
 - Orientaciones, talleres, conferencias, acompañamiento.





- Aceleradora de Cooperativas
 - Promover la incubación y aceleración de empresas cooperativas en Puerto Rico.
 - Seminarios
 - Acompañamiento Empresarial
 - Asistencia Técnica

FIDECOOP


Fondo de Inversión y Desarrollo de Cooperativo

- Micropréstamos Comerciales
 - 0% de Interés a cooperativas emergentes y en desarrollo
- Líneas de crédito comerciales
- Préstamos Comerciales



**CREA UNA
EMPRESA
COOPERATIVA**

En FIDECOOP estamos para
asesorarte, acompañarte y darte
el respaldo económico que necesitas.



FIDECOOP
FONDO DE INVERSIÓN Y DESARROLLO COOPERATIVO

Impactos Potenciales

- **Socioeconómico**
 - 51% del presupuesto para inversión directa en los Productores (incentivos + árboles)
 - Aumento en la producción hasta 10qt/cda
 - Reducción en los costos de producción de 25% por las prácticas
 - [Proyecto CLUSA USDA Coffee Stabilization and Agricultural Diversification Project](#)[†], El Salvador- 30-60% reducción por la aplicación de insumos orgánicos localmente producidos
 - Acceso a mercados nuevos/expandidos (ej. carbono)
 - Diversificación de ingresos (madera fina y carbono)
- **Ambiental**
 - Siembra de 2.75M+ árboles nuevos bajo sistemas agroforestales climáticamente inteligente.
 - Menor dependencia de insumos sintéticos importados.
 - Aumento en salud de los suelos, la biodiversidad, y masa forestal
 - Cuantificación de la huella de carbono
- **Sostenibilidad**
 - Organizaciones y cooperativas con capacidades más fuertes continuarán proporcionando servicios/técnicas más allá del proyecto.
 - Productores más resilientes con mayores ingresos.
 - Captura de datos para análisis actuales y futuros de impacto ambiental y socioeconómico
 - Ecosistema de servicios que beneficia a todos los involucrados, desde los agricultores hasta los consumidores, y que tiene un impacto positivo en el medio ambiente



Finca La Sombra LLC,
Guayanilla



ESTACIÓN
EXPERIMENTAL
AGRÍCOLA™
CCA - UPR - RUM



SUSTAINCERT



Indiera Baja, Maricao



¡Muchas gracias!

Marcus Laws

Project Director
NCBA CLUSA

mlaws@ncbaclusa.net

climatesmart@ncba.coop

<https://ncbaclusa.coop/prscs/>

Franco Jiménez Sanabria

Oficial de Servicios
Educativos

Liga de Cooperativas de
Puerto Rico

educacion@liga.coop

787-764-2727 ext. 229



CONTACT INFORMATION

To learn more about cooperatives, NCBA CLUSA and our projects, visit www.ncbaclusa.coop

Doug O'Brien, President and CEO –
do'brien@ncba.coop

Mary Griffin, Senior Advisor & Executive Director of CDF –
mgriffin@ncba.coop

Teia Evans, Project Director, Strengthening the Co-op Ecosystem –
tevens@ncba.coop

Marcus Laws, Project Director, Puerto Rico Partnership for CSC –
mlaws@ncbaclusa.net

Aaliyah Nedd, Director of Government Relations –
anedd@ncba.coop

Thank you

- Questions? Email: RuralPartnersNetwork@USDA.gov
- Website: Rural.gov
 - Opportunity to subscribe to receive the latest RPN Updates on the website.
- Twitter: @ruralgov
- Newsletter: [Rural Connections-click to subscribe](#)
- 2022 RPN Annual Report: [Link on Rural.gov](#)



USDA is an equal opportunity provider, employer, and lender..